



45/0 Portable Spectrophotometer CS-600CG

---Color and Gloss Simultaneous Measurement

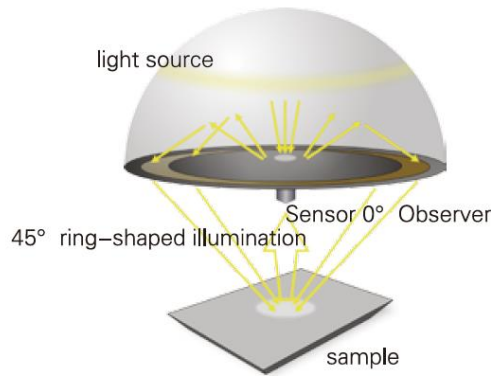


CS-600CG spectrophotometer is a small lightweight portable 45/0 geometry color measuring instrument, CS-600CG can measure both color and 60° gloss in one instrument. 45/0 geometry is the most consistent with the visual method, which can completely eliminate the specular light on the surface of the texture, and the built-in gloss sensor can accurately measure the gloss of the surface. It is suitable for the color and gloss measurement of automotive parts, textiles, coatings, plastic, road traffic signs, packaging and raw materials.

1. Instrument Introduction

1).Instrument adopts 45/0 geometry (45 ring-shaped illumination, 0 degree viewing)

The innovative ring-shaped illumination system eliminates the direction dependence, regardless of changing the sample position, the tilt sample or the rotating of instrument, it can achieve the high accuracy and the best repeatability, it reduces the influence which the grain brings to the lowest. The measurement on the surface of abrasive, textured and structured materials has brought great advantages.



45/0 Geometry Structure

2).Compatible with 60 Degree Gloss Measurement (CS-600CG)

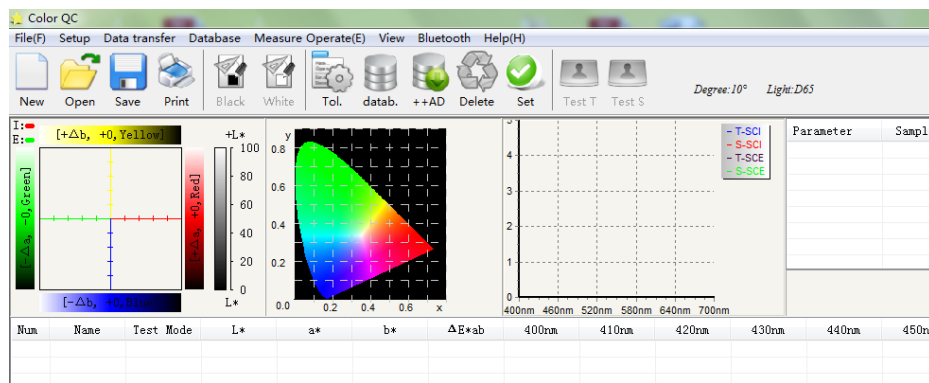
The instrument is with a high precise gloss measuring sensor that enables simultaneous measurement of gloss and color.

3). Comply with International Measurement Standards

The instrument complies with all the color measurement standards of CIE, ISO, ASTM, DIN and achieves the international leading level.

4).Free Color QC Software

Our spectrophotometer comes with free PC color QC software, which is applicable in various industries for management of color value. It is used for store test result, generate test report and print test report after connect with printer.



5). Every Instrument is with Verification Certification

Each instrument comes with verification certification to ensure the authority of instrument test data.



6).Longest Device Guarantee Time



- a. One Year Guarantee Time.
- b. If testing data is not correct, we can do refund.
- c. We will provide testing report for every device to assure the authority of the data and it will save the calibration cost for 1 year.

2. More Instrument Pictures



Main Instrument



Instrument Bottom



Detail interface



Black and white calibration box



Gloss Calibration Tile (only for CS-600CG)



3. Technical Data

Brand name	CHNSpec
Model Number	CS-600CG
Function	Color and Gloss Measurement
Geometry	45/0(45 ring-shaped illumination,0 observe degree)
Aperture	10mm
Wavelength	400-700nm
Wavelength interval	10nm
Sensor	High sensitivity silicon photodiode
Illumination	LED
Repeatability	light splitting reflectivity: standard deviation within 0.08%
	Chromaticity values; $\Delta E^*ab \leq 0.03$ (After calibration, standard deviation of 30 measurements on test white board, 5 second intervals), Maximum: 0.05
Inter-instrument agreement	ΔE^*ab within 0.2 (BCRA color charts II, average of the 12 charts)
Language	English, Chinese
Observer	2°/ 10°
Light Source	A,C,D50,D55,D65,D75,F1,F2,F3,F4,F5,F6,F7,F8,F9,F10,F11,F12,CWF,U30.DLF,NBF, TL83,TL84.U35
Color space	CIE-L*a*b, L*C*h, L*u*v, XYZ, Yxy, Reflectance Hunterlab, Munsell MI, CMYK, RGB, HSB
Index	WI (ASTM E313-10, ASTM E313-73, CIE/ISO, AATCC, Hunter, Taube Berger, Ganz, Stensby); YI (ASTM D1925, ASTM E313-00, ASTM E313-73); Tint (ASTM E313, CIE, Ganz) Metamerism index Milm, Stick color fastness, Color fastness ISO luminance, 8 gloss, A density, T density, M density, E density
Color Difference	$\Delta E^*ab, \Delta E^*CH, \Delta E^*uv, \Delta E^*cmc(2:1), \Delta E^*cmc(1:1), \Delta E^*94, \Delta E^*00, \Delta Eab$ (Hunter), 555 shade sort
Color Space	CIE-15-2004; ASTM-D523; ASTM-D2244; ASTM D2457



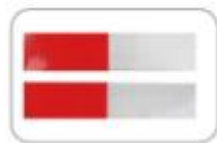
Test Angle	60°
Test Area	5x10 mm
Test Range	0 – 1000 GU
Repeatability	0.2GU(0-100GU) 0.2%(100-1000GU)
Reproducibility	1.0 GU(0-100GU) 1.0%(100-1000GU)
Life Time	10 years , 3 million tests
Language	English, Chinese
Data storage	20000 test results
Interface	USB
Screen	2.8 inch color screen
Battery capacity	rechargeable, 10000 continuous tests, 7.4V/6000mAh
Work temperature range	0~45°C, relative humidity 80% or below(at 35°C),no condensation
Size	181x73x112mm(L*W*H)
Weight	about 800g (does not include battery's weight)
Standard accessories	Power adapter, lithium battery, operate manual, color QC software, USB cable, black and white calibration tile, gloss calibration tile, portable bag

4. Application Examples

Plastic and Rubber



Automobile Decoration



Road Signs



Plastic Floor

Coating



Color Steel Plate



Home Decoration



Coil Coating

Thin Films



PET Film



Screen Film



Reflective Film

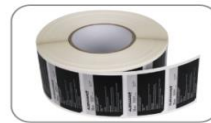
Print



Plastic Package



Magazine



Label

5. Packing List





Qty.	Name	Qty.	Name
1	Main Instrument	1	Power Line
1	Operating Manual	1	USB Cable
1	Driving Software	1	Black/White Calibration Tile
1	Color QC Software	1	Verification Certification
1	Packing List	1	Warranty Card
1	Gloss Calibration Tile (only for CS-600CG)	--	--

LINE: @itokin2000.com

